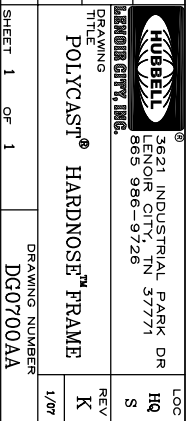


- NOTES:**
1. MAT'L: ASTM A48 GR30-B OR GR35-B  
CAST IRON W/ BLACK FINISH
  2. RECOMMENDED GRATES:  
DG0641 CAST IRON  
DG0641D DUCTILE IRON

ALL DIMENSIONS ARE IN INCHES UNLESS OTHERWISE SPECIFIED

DSN	BY	DATE	WEIGHT	LOC
255		10/17/90	14.8#	HQ
DRN	CHK	10/28/90	SCALE	S
169	169	10/28/90	3'-1'	
ENG	APR	10/28/90	SIZE	REV
611	311	10/28/90	B	K
APP				1/07
JOB NUMBER	90431		SHEET 1 OF 1	DRAWING NUMBER
				DG0700AA



DRAWING TITLE: POLYCAST® HARDNOSE™ FRAME